

444

Shake Freezer

Two Flavor

Features

Serve any two flavors of a wide variety of frozen beverages, like shakes and smoothies, with the assurance of safe product temperatures for dairy products.

Freezing Cylinder

Two, 7 quart (6.6 liter).

Refrigerated Mix Hopper

Two, 20 quart (18.9 liter). Separate hopper refrigeration (SHR) maintains mix below 41°F (5°C).

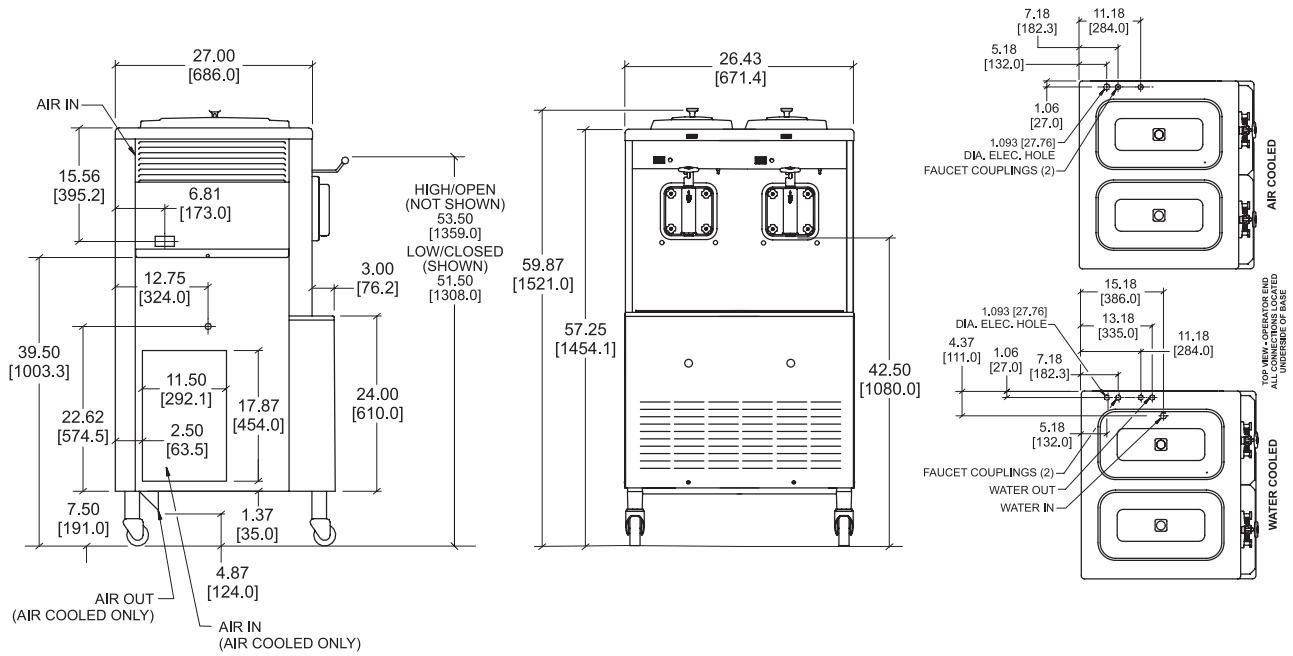
Indicator Lights

Add Mix light alerts the operator to add mix.

Solid State Controls

Thermistor control precisely monitors temperature and maintains consistent quality in product texture through solid state technology.





FIGURES IN BRACKETS INDICATE MILLIMETERS / DECIMAL DIMENSIONS EQUAL TO (PLUS OR MINUS 1/16 INCH [1.5mm]).

| | | |
|-------------------|----------------|---------------|
| Weights | lbs. | kgs. |
| Net | 645 | 292.6 |
| Crated | 720 | 327.0 |
| | cu. ft. | cu. m. |
| Volume | 48.1 | 1.3 |
| Dimensions | in. | mm. |
| Width | 26-7/16 | 672 |
| Depth | 33 | 838 |
| Height | 59-7/8 | 1521 |
| Floor Clearance | 7-1/2 | 191 |

*Mounted on standard casters

| Electrical | Maximum Fuse Size | | Minimum Circuit Ampacity | | Poles (P) Wires (W) |
|--------------------|-------------------|-------|--------------------------|-------|---------------------|
| | Left | Right | Left | Right | |
| 208-230/60/1 Air | 25 | 25 | 20 | 18 | 2P 3W |
| 208-230/60/1 Water | 25 | 25 | 20 | 18 | 2P 3W |
| 208-230/60/3 Air | 15 | 15 | 13 | 11 | 3P 4W |
| 208-230/60/3 Water | 15 | 15 | 12 | 11 | 3P 4W |

This unit may be manufactured in other electrical characteristics and may have additional regulatory agency approvals. Consult the local Taylor Distributor for other electrical characteristics and agency approvals based on specific electrical and country requirements.

(For exact electrical information and approval marks, always refer to the data label of the unit.)

Continuing research results in steady improvements; therefore, these specifications are subject to change without notice.

Bidding Specs

Electrical: Volt _____ Hz _____ ph _____
 Neutral: Yes No **Cooling:** Air Water NA

Options: _____

Authorized Taylor Distributor

Specifications

Electrical

Two dedicated electrical connections are required. See the Electrical chart for the proper electrical requirements. Manufactured to be permanently connected. Consult your local Taylor distributor for cord & receptacle specifications as local codes allow.

Beater Motor

Two, 1.0 HP

Refrigeration System

Two, 11,000 BTU/hr. R404A.
 Separate Hopper Refrigeration (SHR), One, 400 BTU/hr. R134A.
 (BTUs may vary depending on compressor used.)

Air Cooled

Minimum 3" (76 mm) around all sides. Install the deflector provided to prevent recirculation of warm air. Minimum air clearances must be met to assure adequate air flow for optimum performance.

Water Cooled

Water inlet and drain connections under side of base 1/2" FPT.

Options

- Faucet
- Hopper Locks
- Panel Spinner
- Syrup Rail (side mount)



750 N. Blackhawk Blvd.
 Rockton, Illinois 61072
www.taylor-company.com